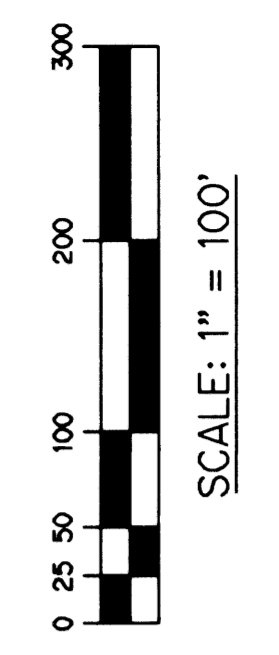


# KING'S ACADEMY AND PALM BEACH COUNTY PARK SITE

A PARCEL OF LAND LYING WITHIN SECTIONS 29 AND 32, TOWNSHIP 43 SOUTH, RANGE 42 EAST, BEING A REPLAT OF PORTIONS OF TRACTS 1, 5, 6, 7, 8, 12, 13, 14, 16, AND 17, AND THE 30' PLATTED ROADS ABUTTING SAID TRACTS, IN BLOCK 2, PALM BEACH FARMS CO. PLAT NO. 3, ACCORDING TO THE PLAT THEREOF, AS RECORDED IN PLAT BOOK 2, PAGES 45 THROUGH 54 OF THE PUBLIC RECORDS, ALL LYING WITHIN SECTIONS 29 AND 32, TOWNSHIP 43 SOUTH, RANGE 42 EAST, PALM BEACH COUNTY, FLORIDA

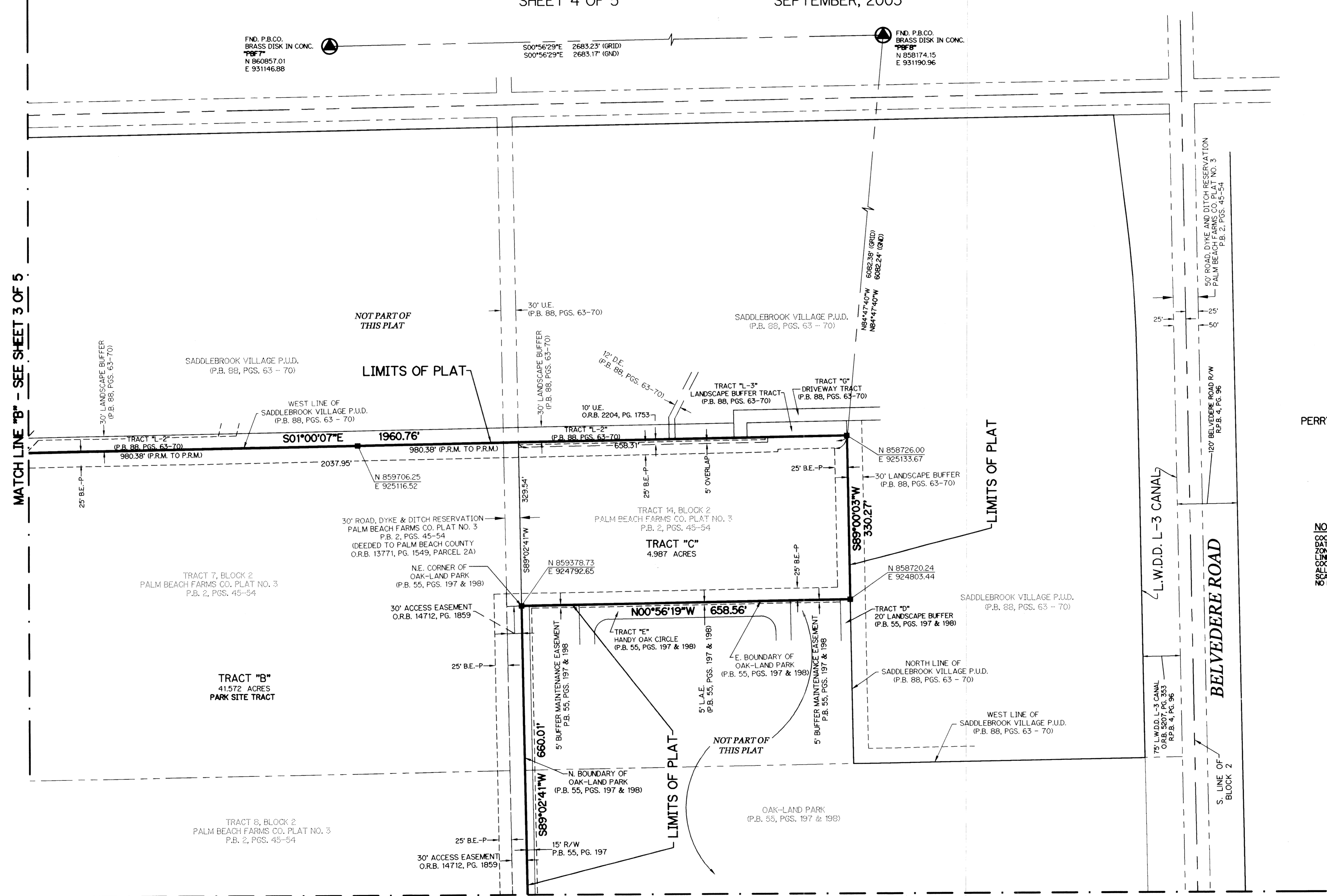
SHEET 4 OF 5      SEPTEMBER, 2003



FND. P.B.CO. BRASS DISK IN CONC. "PBF7" N 860857.01 E 931146.68

500°56'29"E 2683.23' (GRID)  
500°56'29"E 2683.17' (GND)

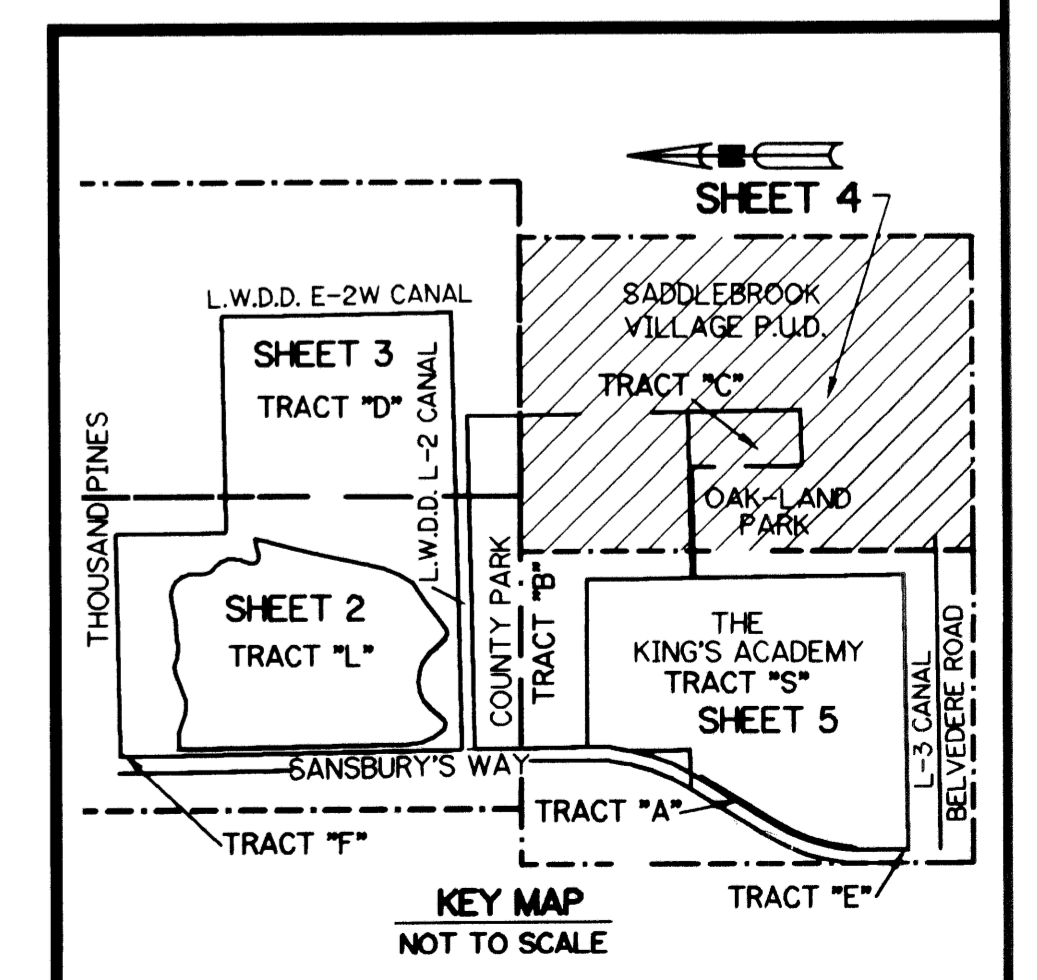
FND. P.B.CO. BRASS DISK IN CONC. "PBF8" N 858174.15 E 931190.96



- LEGEND:**
- - FND CONCRETE MONUMENT
  - - SET PERMANENT REFERENCE MONUMENT, L.B. #6674
  - BE-P - PALM BEACH COUNTY BUFFER EASEMENT
  - BE-L - THE KING'S ACADEMY BUFFER EASEMENT
  - CM - CONCRETE MONUMENT
  - D - CENTERLINE
  - DB - DEED BOOK
  - DE - DRAINAGE EASEMENT
  - L.A.E. - LIMITED ACCESS EASEMENT
  - L.M.E. - LAKE MAINTENANCE EASEMENT
  - L.W.D. - LAKE WORTH DRAINAGE DISTRICT
  - N.T.S. - NOT TO SCALE
  - O.R.B. - OFFICIAL RECORD BOOK
  - R.D.&D. - ROAD, DYKE AND DITCH RESERVATION
  - ESMT - EASEMENT
  - P.B. - PLAT BOOK
  - PGS. - PAGES
  - P.S.M. - PROFESSIONAL SURVEYOR AND MAPPER
  - R/W - RIGHT-OF-WAY
  - S.T. - SURVEY TIE
  - UT - UTILITY EASEMENT
  - P.O.B. - POINT OF BEGINNING
  - P.O.C. - POINT OF COMMENCEMENT
  - N 737648.011' E 905238.2326' - DENOTES STATE PLANE COORDINATES

THIS INSTRUMENT PREPARED BY  
 PERRY C. WHITE, P.S.M. 4213, STATE OF FLORIDA  
 LAWSON, NOBLE AND WEBB, INC.  
 ENGINEERS PLANNERS SURVEYORS  
 420 COLUMBIA DRIVE, SUITE 110  
 WEST PALM BEACH, FLORIDA 33409  
 LB-6674

**NOTE:**  
 COORDINATES SHOWN ARE GRID COORDINATES  
 DATUM = NAD 83 (1990 ADJUSTMENT)  
 ZONE = FLORIDA EAST ZONE  
 LINEAR UNIT = U.S. SURVEY FEET  
 COORDINATE SYSTEM = 1983 STATE PLANE TRANSVERSE MERCATOR PROJECTION  
 ALL DISTANCES ARE GROUND  
 SCALE FACTOR = 1.0000236  
 NO ROTATION = (GRID BEARING TO PLAT BEARING)



SUBDIVISION KING'S ACADEMY AND PALM BEACH COUNTY PARK SITE  
 BOOK 100 PAGE 108  
 RECORD # 150A  
 CLASS # 40  
 SS. # 02-1057  
 TAX 1065  
 PUD NAME

MATCH LINE "B" - SEE SHEET 3 OF 5

MATCH LINE "C" - SEE SHEET 5 OF 5